



Historical Frontline 4 Bedroom Property with Commercial Space, Direct Beach Access & Ocean Views

Villa in Albufeira

ref. **IP1041AB**
2.800.000€

Situated at this iconic location at the top of the steps and elevator to Albufeira's 'Old Town' Pinnacle beach, this historic building has been completely renovated keeping the traditional façade of beautiful green Portuguese tiles whilst inside the property has been brought up to date with more comfortable modern living standards.

A rooftop plunge pool with spectacular views over the beach and ocean, living areas with those stunning frontline views, plus a commercial space make this property one of a kind.

Key Features:

- 4 en-suite bedrooms, including a dressing area in the master suite.
- Fully renovated interiors with high-end finishes.
- Beach & ocean views from multiple areas of the property.
- Commercial space with direct access to beach front terrace
- Rooftop pool & terrace plus interior courtyard terrace

Through the front door is an open entrance space with doors to the large commercial room and another entrance to the living areas of the property.

On the ground floor there are 2 en-suite bedrooms with access out to an internal courtyard, a laundry, storage cupboard and stairs to the first floor.

Upstairs is the living room with 2 windows and 2 Juliet balconies overlooking the beach and sea incorporating a fitted kitchen giving an open plan layout.

Status	Available
Type	Villa
Year Renovated	2024
Bedrooms	4
Bathrooms	5
Plot Area	200
Built Area	348



This floor also has the master suite with dressing area and a separate social bathroom off of the living room.

Up another level is a spacious room with a vaulted ceiling and many skylights allowing plenty of sunlight to enter.

This room has a shower room and w.c. set apart by frosted glass doors.

On this upper level is access out to the rooftop terrace and plunge pool where the view gets even more spectacular!

There is an option to buy the contemporary 3 bedroom renovated villa behind, linking the 2 properties via the rooftop and creating a large property that could become a successful boutique hotel in this truly unique location. Please see ICON property ref IP1042AB and contact us for a viewing

Features:

New double glazed windows with internal shutters

Air conditioning throughout

Laundry room

Velux skylights

Fitted wardrobes

Unique turning light switches

Distances:

Beach 5 metres to steps, 55 metres to elevator

Cafés, snack bars, restaurants all within 1 minute walk

Supermarket 450 metres (7 minute walk)

Old Town square 350 metres (5 minute walk)

Shopping Mall 1.7 km

Faro airport 40 km (30 minutes via motorway)



Gallery



1. Historic House



2. Rooftop Pool



3. Location



4. Beachfront Property



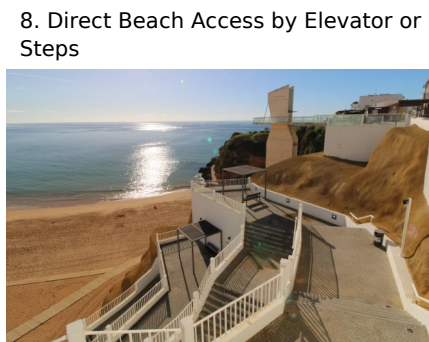
5. Living Room Views



6. Views from Pool



7. House



8. Direct Beach Access by Elevator or Steps



9. Beach



10. Albufeira Pinnacle Beach



11. Option of Second Property

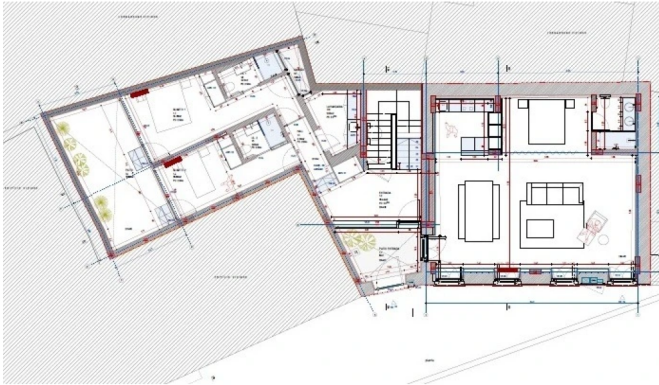


12. Living Room

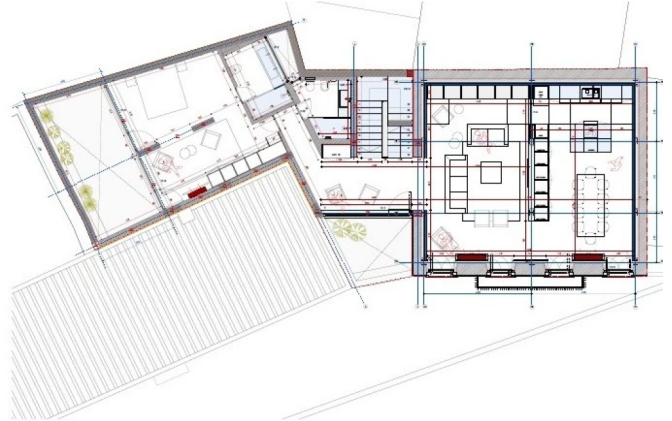


Plans

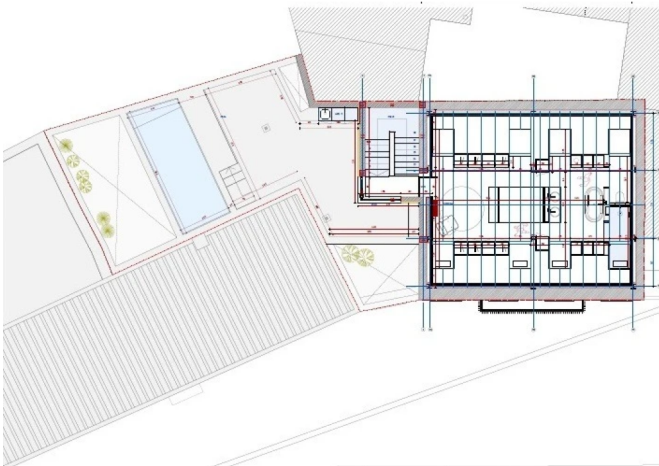
Ground Floor Plan



First Floor Plan



Top Floor Plan



Roof Top Plan

