



Plot with Project Submitted for a Padel Academy with 9 Courts in a Prime Location in Almancil

Commercial in Almancil

ref. **IP1046AC**
3.200.000€

Plot of land of 7252m² in an elevated and highly visible location with a project submitted to install 9 Padel courts and a building of 450m² for use as a food and beverage establishment, equipment shop and first floor observation terrace.

3D renders show the possibility of the design of the building. Alternatively there is a pre approved project already in place for a warehouse of 1450m² with 1954m² basement.

Key Features:

- Situated in a high-activity area with easy access from 3 major routes
- Commercial use for a store, supermarket, warehouse, or sports facility
- Ample parking spaces
- Within the 'Golden Triangle' ensures a good ROI

Distances:

Walking distance from Almancil main thoroughfare
 4 km (7 minute drive from Quinta Do Lago)
 11.7 km (less than 15 minutes drive) from Faro airport

Status	Available
Type	Commercial
Plot Area	7252
Built Area	450



Gallery



1. Padel Academy



2. Padel Academy



3. Padel Academy



4. Padel Academy



5. Padel Academy



6. Padel Academy



7. Padel Academy

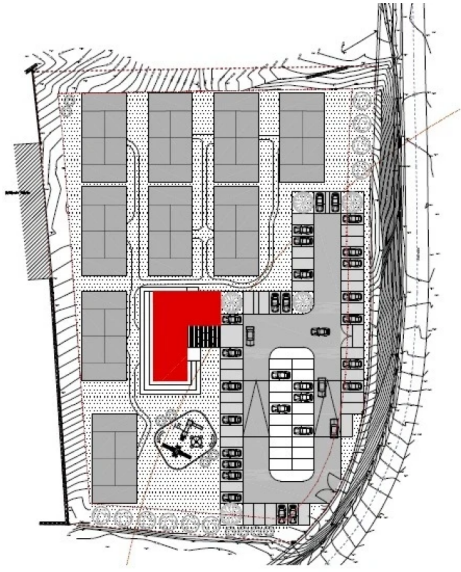


8. Padel Academy



Plans

Plans



Topography

