



2 Bedroom Penthouse Apartment at Golf Course in Closed Secure Condominium, Vilamoura

Apartment in Vilamoura

ref. **PIP13BVR**
550.000€

Key Features:

- Top floor apartment with elevated views
- 2 spacious double bedrooms with fitted wardrobes, 2 bathrooms
- 2 parking spaces in basement garage with lockable storage room
- Expansive outdoor spaces with a swimming pool and landscaped gardens.
- Peaceful location with easy access to 6 golf courses and Vilamoura Marina

This smart apartment is located within the greens of one of the six Vilamoura golf courses.

A closed condominium with large swimming pool, indoor heated pool, gymnasium, 24 hour reception and a piazza snack bar open most of the year makes this apartment a perfect turnkey property or even as a year round residence.

The apartment consists of an entrance hall, a large living/dining room with patio doors leading out to a private terrace with views over the Piazza, and a fully equipped kitchen with terrace and laundry area.

Along a hallway is a master bedroom with fitted wardrobes, private terrace and en-suite bathroom, a guest bedroom and a guest bathroom.

Living areas 81m²

Terraces 21.85m²

Garage & storage 26.65m²

Features:

Status	Available
Type	Apartment
Energy	B
Year of Construction	2009
Bedrooms	2
Bathrooms	2
Plot Area	130
Built Area	81



24-hour reception and security with CCTV
Central Piazza area
Lounge bar, piazza bar/snack-bar, pool bar
Large outdoor and indoor heated pool
Children's pool, play area and kid's room
Fully equipped fitness room
Direct access by lift from underground parking garage to each apartment level
Intelligent card entry system/ video entry phone
Full air conditioning throughout (Mitsubishi)
Under floor heating and heated towel rails in bathrooms
3-metre-high ceilings & extra-large double glazed windows
Electric shutters with central control in entrance hall
High-specification fully equipped kitchen (AEG appliances)
Silent alarm linked to reception & 24-hour security
Wi-Fi and international T.V. channels
Solar panels for hot water

Distances:

5 km to Vilamoura marina, beaches & shopping
1 km to golf clubhouse
2 km to big supermarket
26 km to Faro airport



Gallery



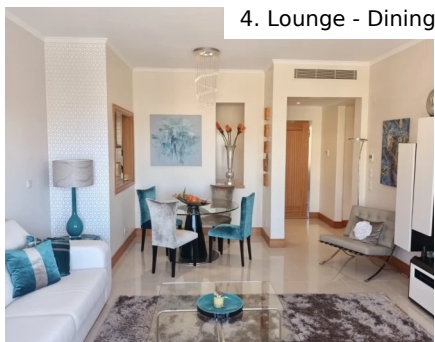
1. Terrace & Views



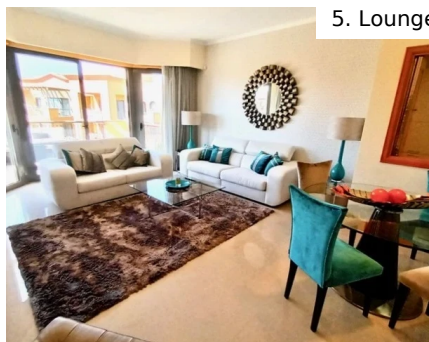
2. Pool



3. Penthouse Apartment



4. Lounge - Dining



5. Lounge



7. Kitchen



6. Lounge



9. Master En-Suite Bathroom



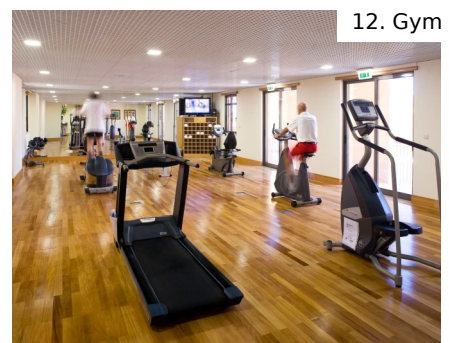
10. Guest Bedroom



8. Master Bedroom



11. Guest Bathroom



12. Gym



Plans

Floor Plans 2 bed

16. Resort Map

